

Oasia Hotel Downtown is a model of urban tropics land use intensification

PA parametric-architecture.com/oasia-hotel-downtown-is-a-model-of-urban-tropics-land-use-intensification

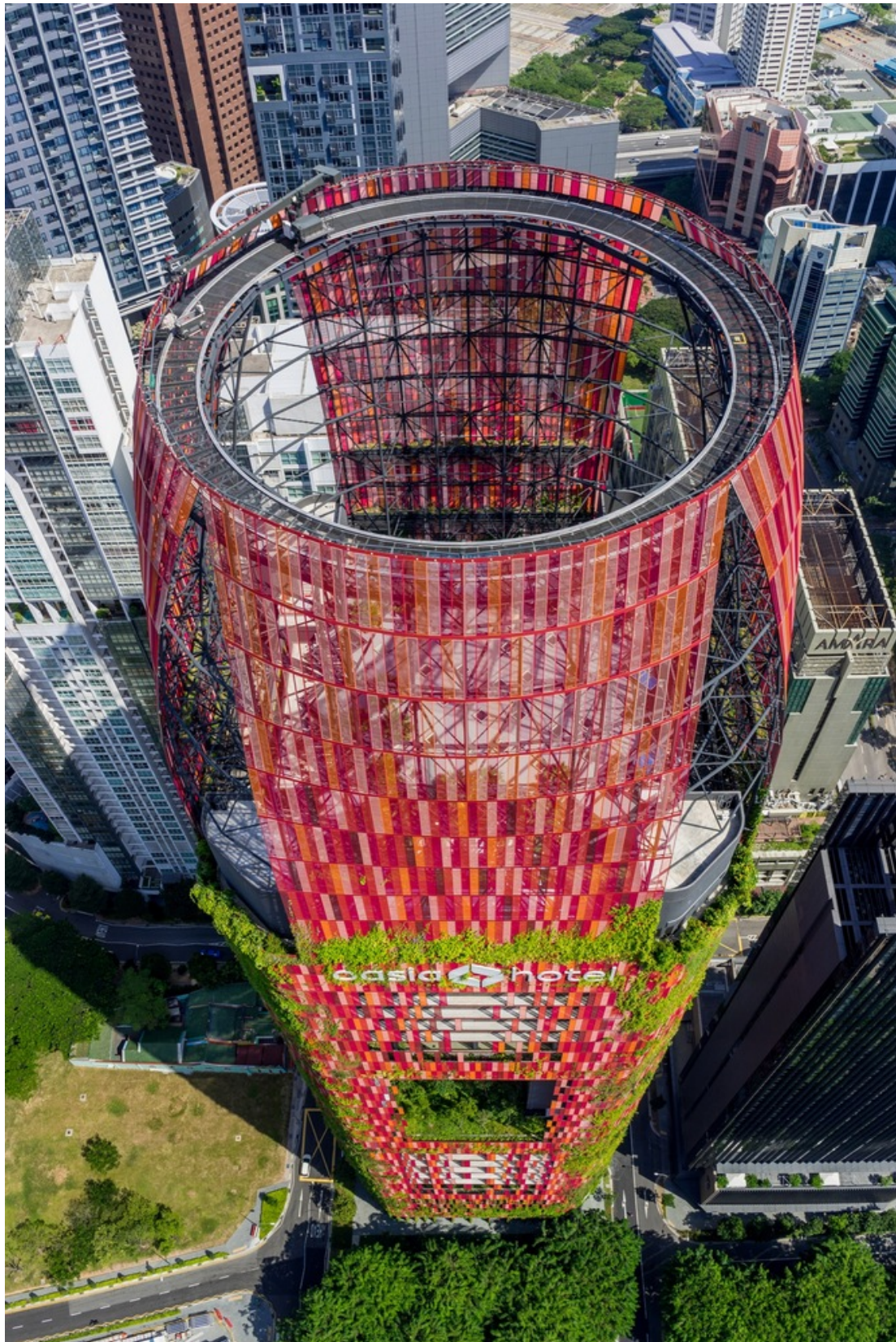
Serra Utkum Ikiz

September 13, 2022





Oasia Hotel Downtown, a bright green skyscraper in the middle of Singapore's congested Central Business District (CBD). It is a model of urban tropics land use intensification. Unlike the sleek and sealed skyscrapers that emerged from the temperate west, this tropical "living tower" provides an alternate picture to the genre's slick technology.



WOHA developed a sequence of layers, each with its sky garden, in response to the brief for discrete Offices, Hotel, and Club rooms. Despite the great congestion of the inner city, these additional “ground” floors provide ample public areas for recreation and social interaction.

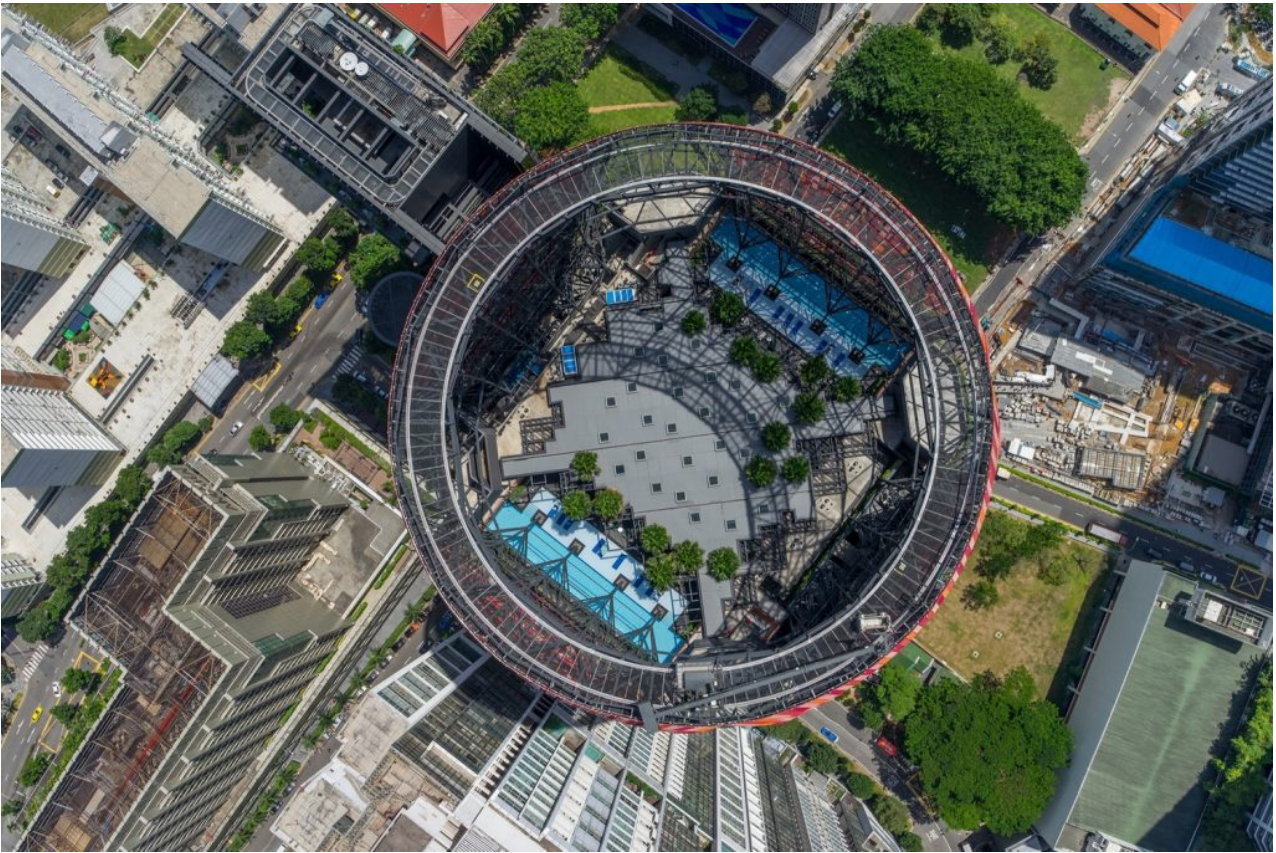


The tower, surrounded by other towers, carves out its interior spaces and dynamic views rather than relying on exterior vistas for visual attraction. Each sky garden designed as an urban verandah, protected at high altitudes by the previous sky garden and open on all sides for formal and visual transparency. The openness also provides for cross-ventilation by allowing winds to move through the structure. Instead of confined, internalized air-conditioned rooms, public places become practical, comfortable, tropical settings with plants, natural light, and fresh air.



Landscaping often employed as architectural surface treatment. It is a significant component of the development's internal and external material palette. The skyscraper designed to shelter birds and animals, bringing biodiversity into the metropolis. This amount of green is thrilling since it adequately compensates for the lack of green in ten adjacent buildings. The tower's red metal mesh coating intended to serve as a background

for 21 different species of creepers, with colorful blooms interwoven amid green foliage, providing food for animals like birds and insects. The creepers will form a mosaic, with each kind taking over its preferred light, shade, and wind conditions.



Project Info

Architects: WOHA

Area: 19416 m²

Year: 2016

Manufacturers: AGROB BUCHTAL, Hansgrohe, Falcon, Falcon Incorporation, Hemsley Holding, Relex Illumination Pte Ltd, TMG Projects, Technolite

Air Conditioning and Mechanical Ventilation System: Great Resources M&E Contractor Pte Ltd.

Electrical: Kimta Electric Pte Ltd.

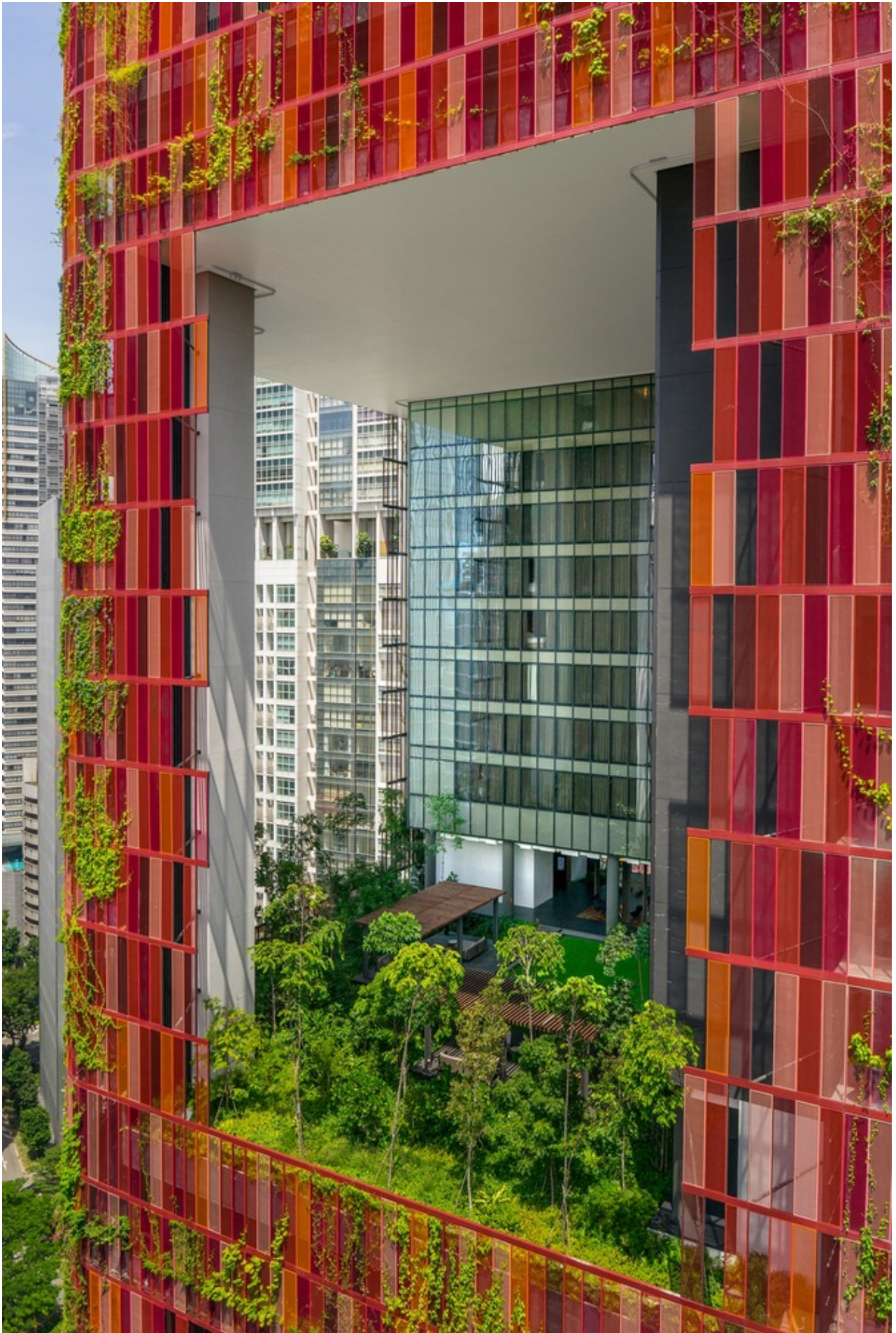
ID – Office Interior: New Pace Furnishing Pte Ltd.

Interior Design: Studio Patricia Urquiola

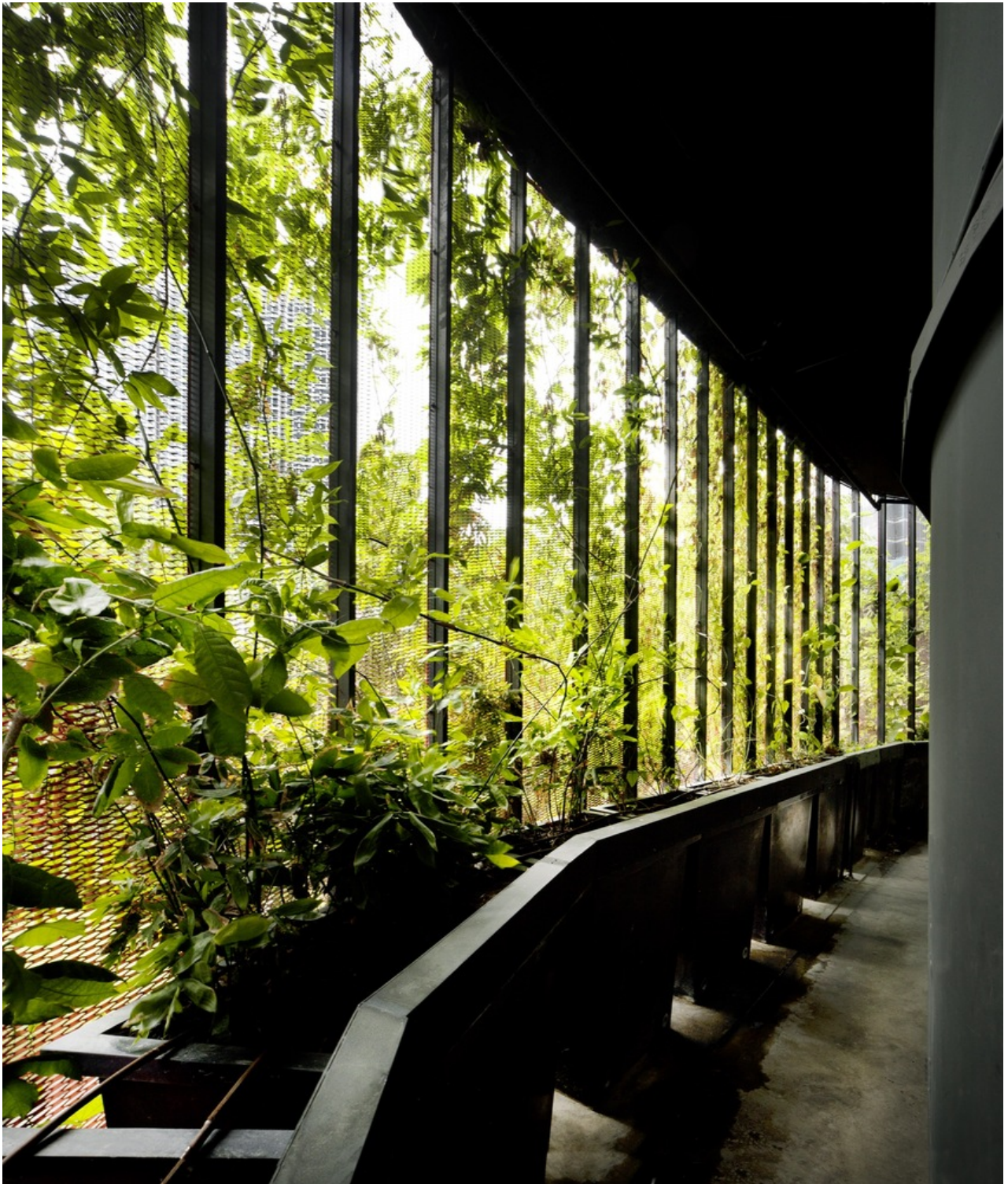


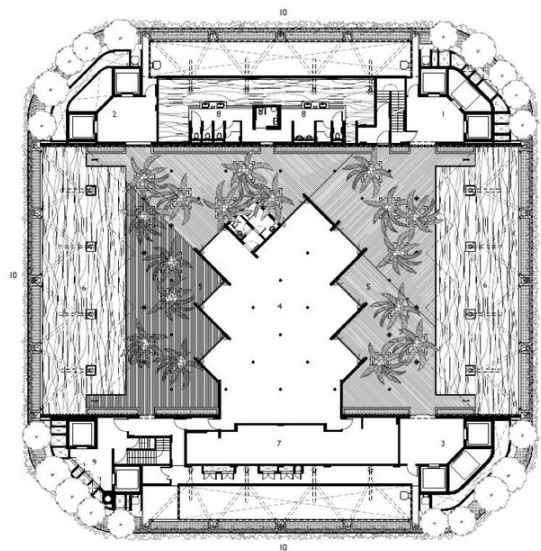










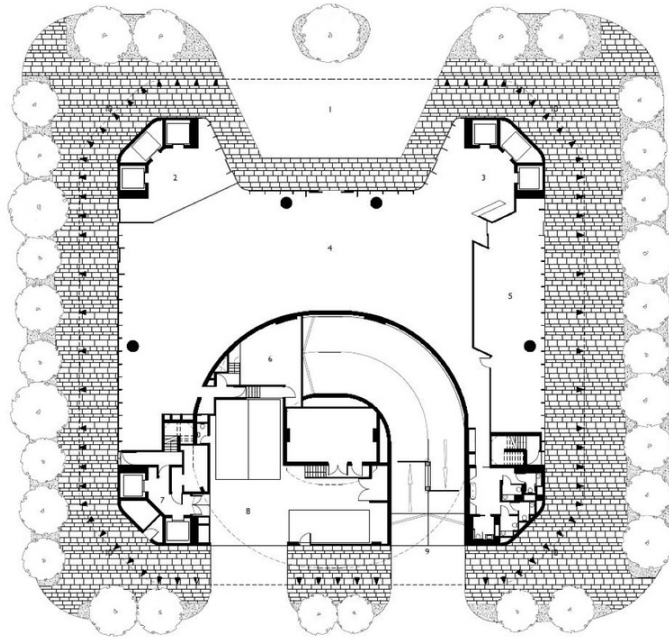


LEGEND

- 1 HOTEL LIFT
- 2 CLUB ROOM LIFT
- 3 GUESTROOM LIFT
- 4 RESTAURANT
- 5 POOL DECK
- 6 SWIMMING POOL
- 7 KITCHEN
- 8 CHANGING ROOM
- 9 SERVICE LIFT
- 10 GREEN FACADE

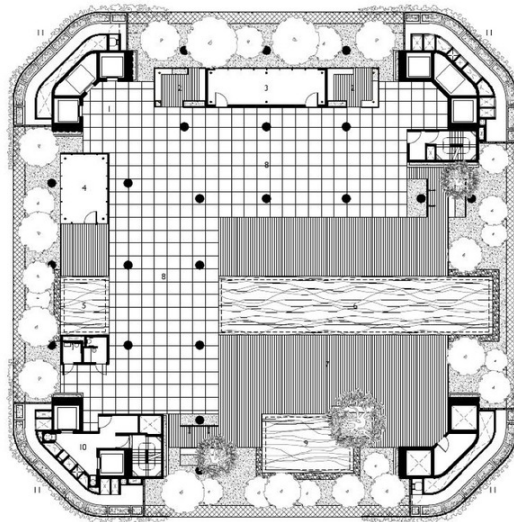
OASIA DOWNTOWN
27TH STOREY PLAN
1 2 3 4 5 6 7 8 9 10
1:250
WOHA ARCHITECTS PTE LTD
APRIL 2014
© 2014 WOHA Pte Ltd. All rights reserved.





- LEGEND
- 1 DROP OFF
 - 2 OFFICE LIFT
 - 3 HOTEL LIFT
 - 4 RESTAURANT
 - 5 BAR
 - 6 KITCHEN
 - 7 SERVICE LIFT
 - 8 LOADING BAY
 - 9 CARPARK DRIVEWAY
 - 10 GREEN COLUMNS

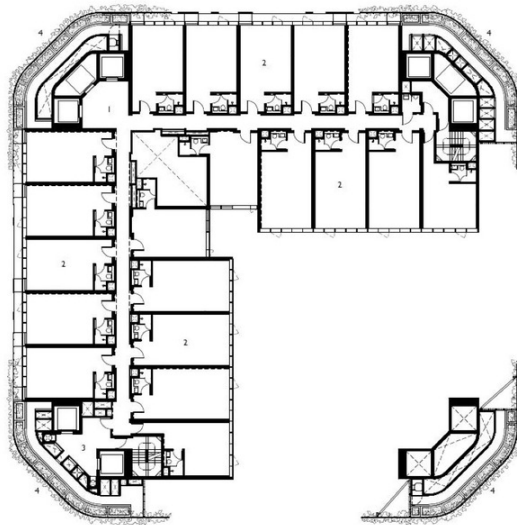
OASIA DOWNTOWN
1ST STOREY PLAN
0 1 2 3 4 5 10M
1:400
WOHA ARCHITECTS PTE LTD
APRIL 2014



- LEGEND
- 1 OFFICE LIFT
 - 2 CHILL OUT LOUNGE
 - 3 MEETING POD
 - 4 GYM
 - 5 AQUA GYM
 - 6 SWIMMING POOL
 - 7 POOL DECK
 - 8 DRINKING POOL
 - 9 REFLECTION POOL
 - 10 SERVICE LIFT
 - 11 GREEN FACADE

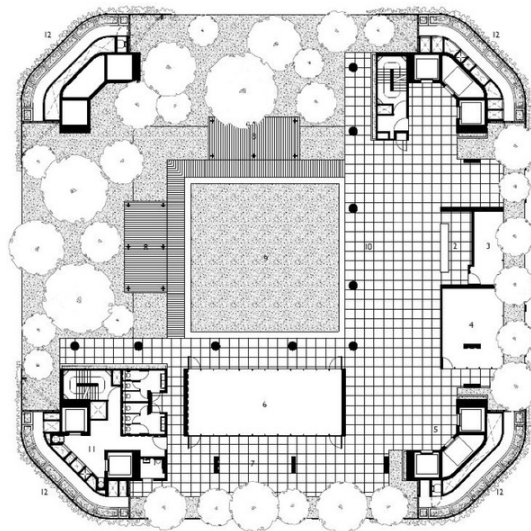
OASIA DOWNTOWN
6TH STOREY SKY TERRACE PLAN
0 1 2 3 4 5 10M
1:400
WOHA ARCHITECTS PTE LTD
APRIL 2014





- LEGEND
- 1 OFFICE LIFT
 - 2 OFFICE UNITS
 - 3 SERVICE LIFT
 - 4 GREEN FACADE

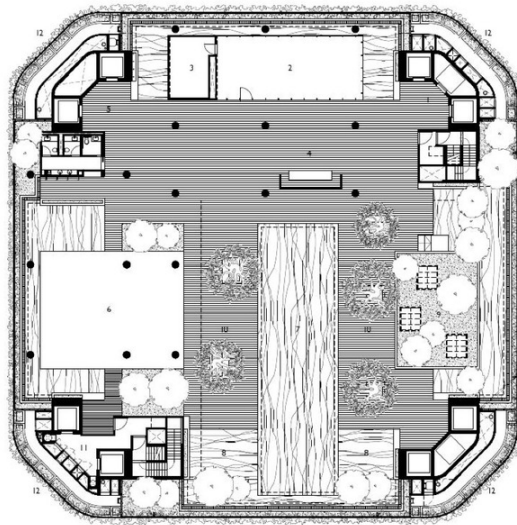
OASIA DOWNTOWN
7TH-11TH STOREY PLAN
0 1 2 3 5 10 M
1:400
WOHA ARCHITECTS PTE LTD
APRIL 2014
© COPYRIGHT 2014 WOHA ARCHITECTS



- LEGEND
- 1 HOTEL LIFT
 - 2 CONCIERGE
 - 3 HOTEL BACK OF HOUSE
 - 4 GYM
 - 5 GUESTROOM LIFT
 - 6 FUNCTION ROOM
 - 7 VERANDAH
 - 8 OUTDOOR LOUNGE
 - 9 BAR
 - 10 LOUNGE
 - 11 SERVICE LIFT
 - 12 GREEN FACADE

OASIA DOWNTOWN
12TH STOREY SKY TERRACE PLAN
0 1 2 3 5 10 M
1:400
WOHA ARCHITECTS PTE LTD
APRIL 2014
© COPYRIGHT 2014 WOHA ARCHITECTS

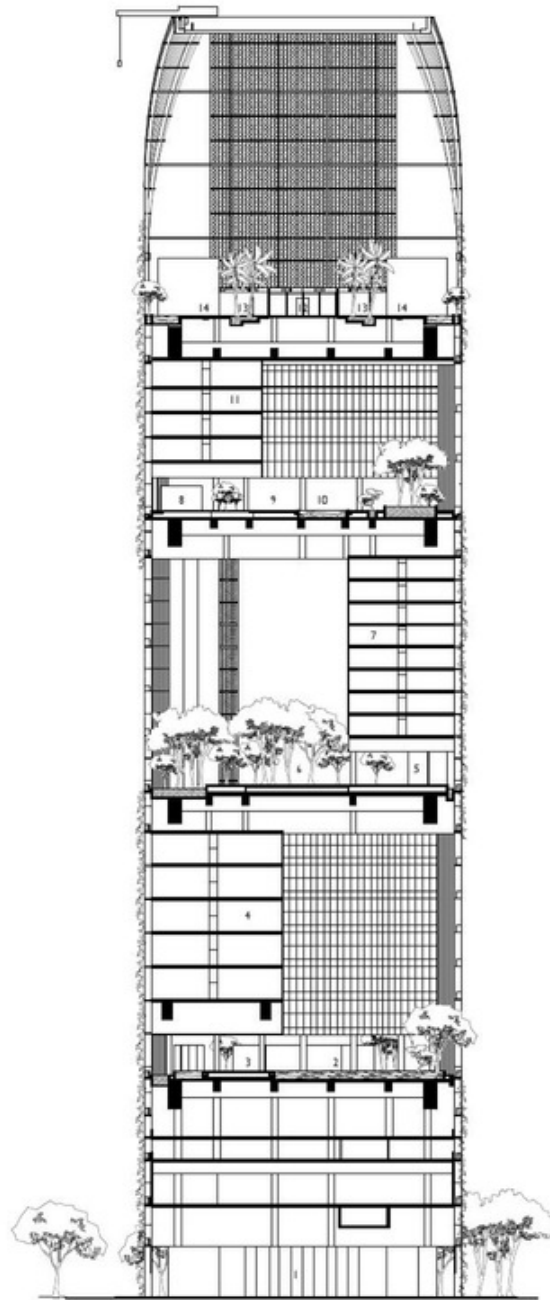




- LEGEND
- 1 HOTEL LIFT
 - 2 CLUB LOUNGE
 - 3 KITCHEN
 - 4 CONCIERGE
 - 5 CLUB ROOM LIFT
 - 6 OPEN PAVILION
 - 7 SWIMMING POOL
 - 8 WADING POOL
 - 9 RAISED PLANTER DECK
 - 10 POOL DECK
 - 11 SERVICE LIFT
 - 12 GREEN FACADE

OASIA DOWNTOWN
21ST STOREY SKY TERRACE PLAN
0 1 2 3 4 5 10 M
1:400
WOHA ARCHITECTS PTE LTD
APRIL 2014





LEGEND

- 1 DROP OFF/RESTAURANT
- 2 SWIMMING POOL
- 3 DINING POOL
- 4 OFFICE UNITS
- 5 HOTEL CONCIERGE
- 6 LAUNDRY
- 7 GUESTROOMS
- 8 OPEN PAVILION
- 9 POOL DECK
- 10 SWIMMING POOL
- 11 CLUB ROOMS
- 12 RESTAURANT
- 13 POOL DECK
- 14 SWIMMING POOL
- 15 ROOF CROWN

OASIA DOWNTOWN
SECTION

0 10 20 40 M

1:1000

WOHA ARCHITECTS PTE LTD
APRIL 2014
© 2014 WOHA Architects Pte Ltd. All rights reserved.

Share:



Serra Utkum Ikiz
